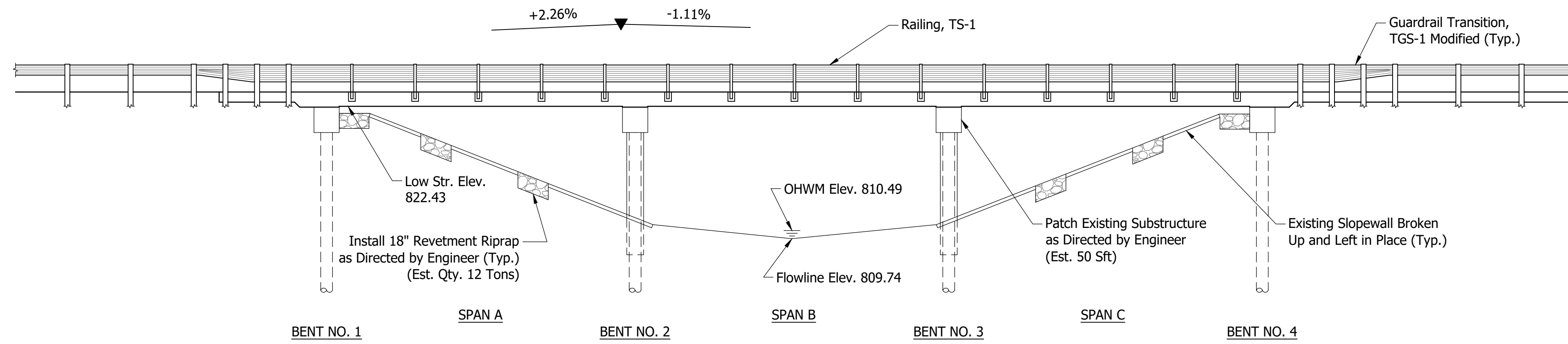
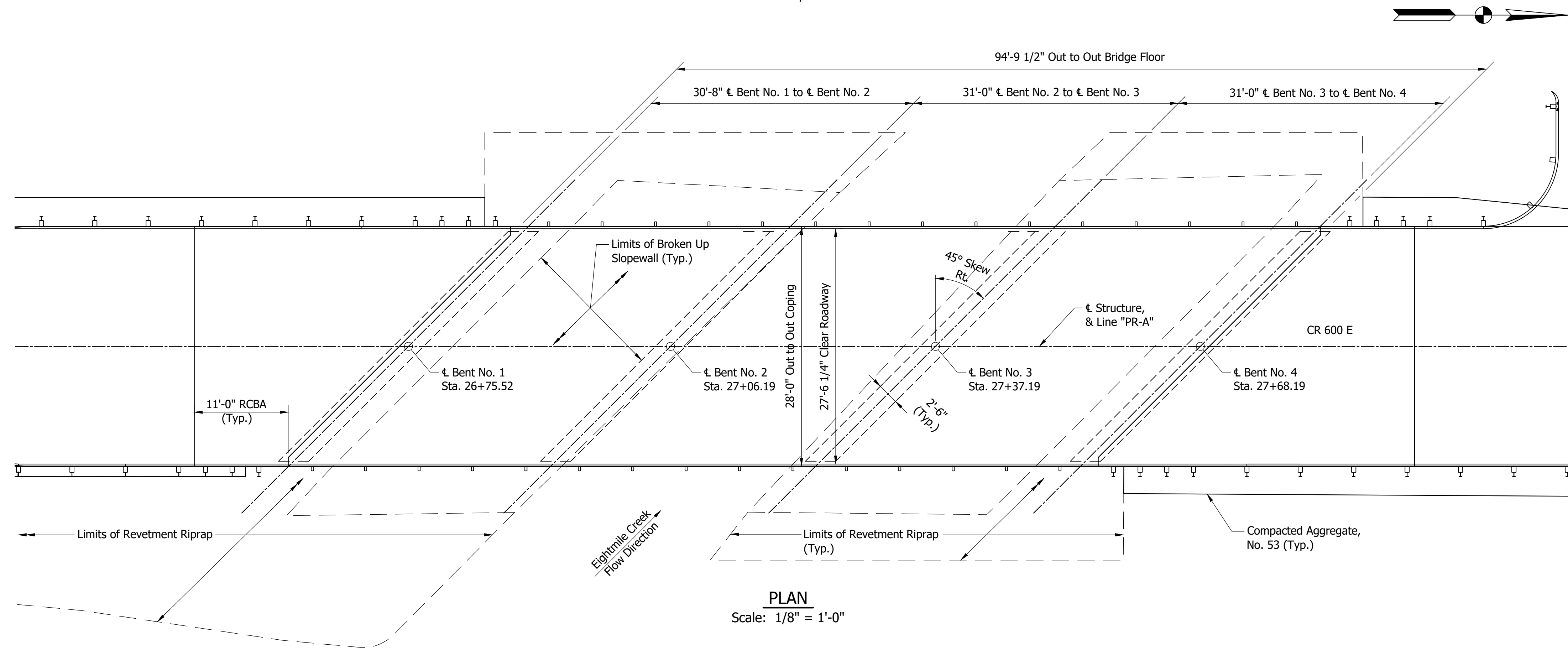


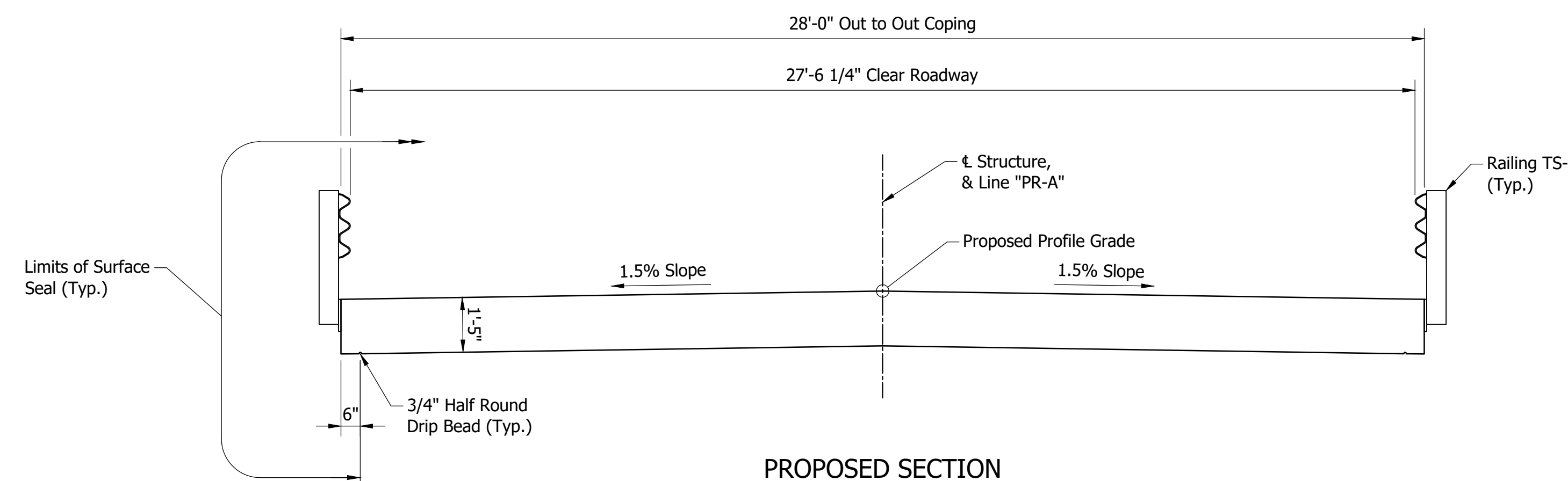
STRUCTURE TO BE BUILT ON A 130' VERTICAL CURVE



ELEVATION
Scale: 1/8" = 1'-0"



PLAN
Scale: 1/8" = 1'-0"



PROPOSED SECTION
Scale: 3/8" = 1'-0"

GENERAL NOTES

- Plans for the existing structure are not available.
- Where new work is to be fitted to old work, the Contractor shall verify all dimensions and conditions in the field and report any errors or discrepancies to the Engineer and assume responsibility for the correctness and the fit of the new part to the existing.
- Reinforcing steel cover shall be 2 1/2" in top and 1" minimum in bottom of floor slab, 3" in footings, except bottom steel which shall be 4", and 2" in all other parts, unless noted.
- Chamfer exposed concrete edges 1" unless otherwise noted.
- Surface seal shall be applied to the deck's top surface, copings, and bottom side to the drip bead.

DESIGN DATA

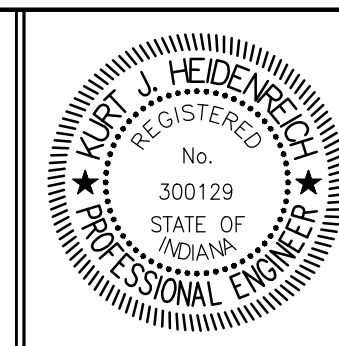
- LIVE LOAD**
Superstructure replacement designed for HL-93 loading, in accordance with AASHTO LRFD Bridge Design Specifications, 8th Edition, 2017.
- Original substructure design data is unknown.
- DEAD LOAD**
Superstructure replacement designed for actual weight plus 35 psf for future wearing surface.

DESIGN STRENGTH

- CONCRETE**
Class C $f_c = 4,000$ psi
Class A $f_c = 3,500$ psi
- REINFORCING STEEL**
Grade 60 $f_y = 60,000$ psi

CONTINUOUS REINFORCED CONCRETE SLAB BRIDGE
3 SPANS: 30'-8", 31'-0", 31'-0"
27'-6 1/4" CLEAR ROADWAY WIDTH, 45° SKEW RT.

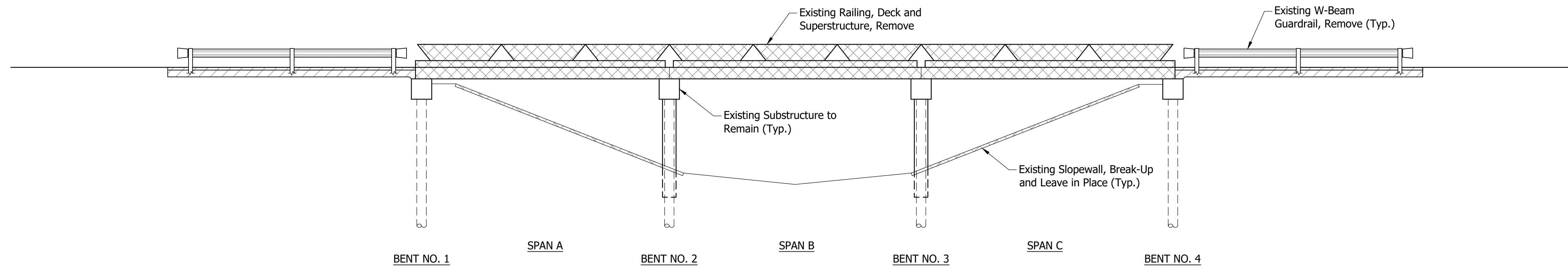
ENGINEERING RESOURCES, INC.
Ph: (260) 490-1025
www.eri.consulting
4175 New Vision Drive
Fort Wayne, Indiana 46845



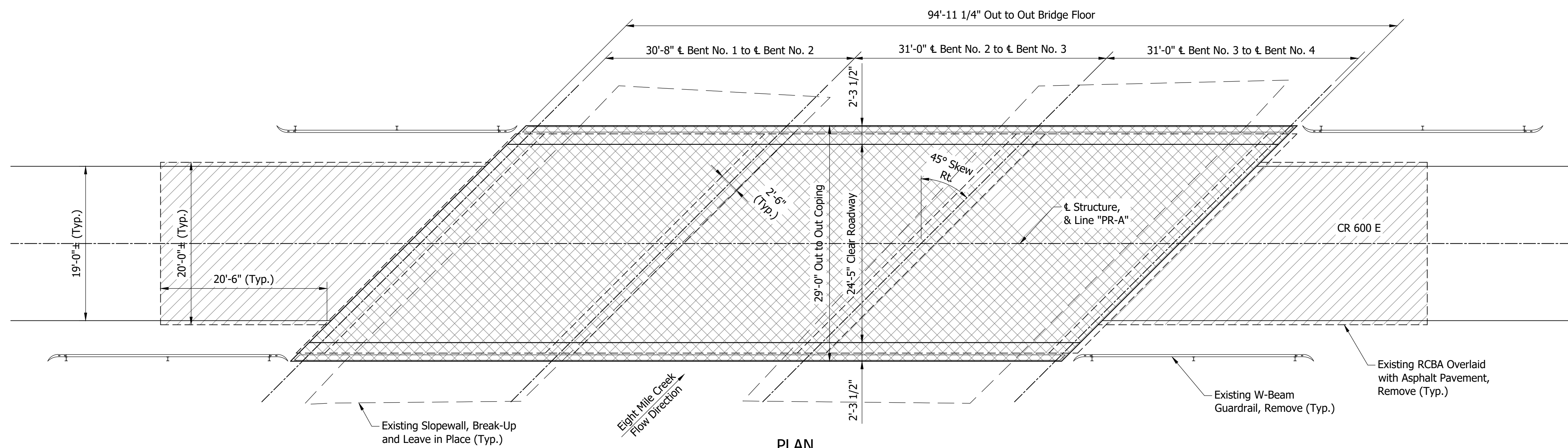
RECOMMENDED FOR APPROVAL: *K. Heidenreich*
DESIGN ENGINEER DATE: 1/7/2021
DESIGNED: AJI DRAWN: AJI
CHECKED: JFW CHECKED: JFW

GENERAL PLAN

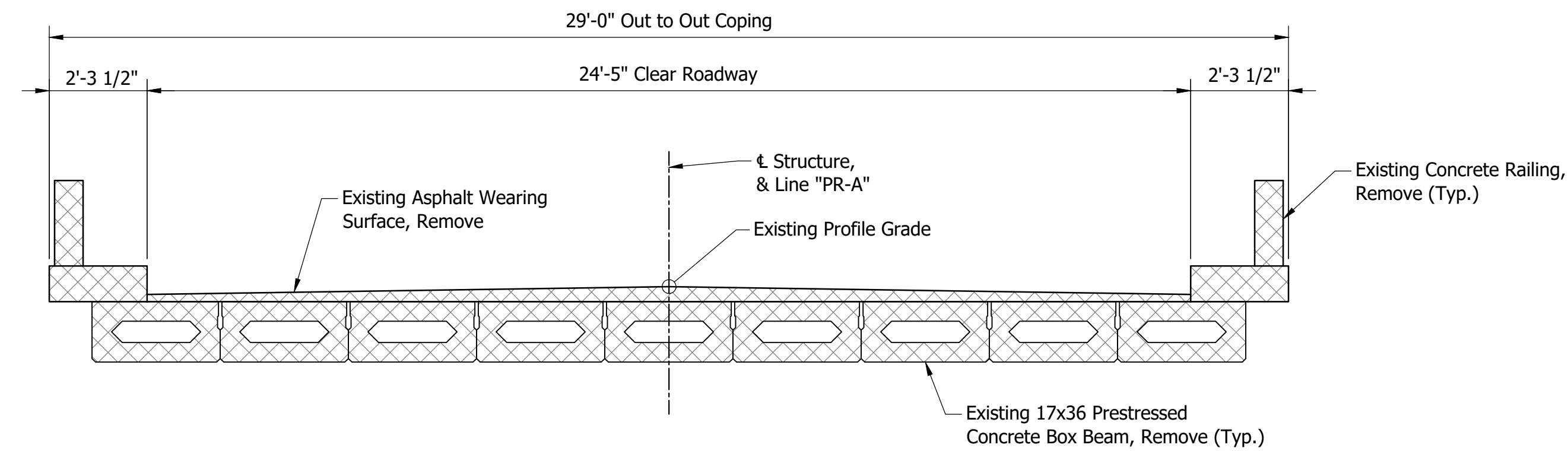
SCALE	BRIDGE FILE
AS NOTED	90-00121
	DESIGNATION
	SHEETS
	11 of 25
CONTRACT	PROJECT
	2019-04



ELEVATION
Scale: 1/8" = 1'-0"



PLAN
Scale: 1/8" = 1'-0"

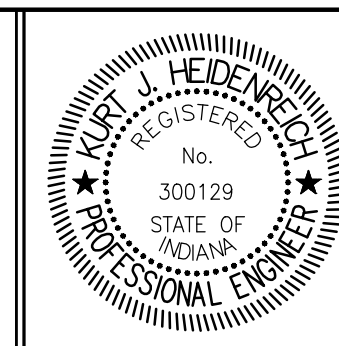


EXISTING SECTION
Scale: 3/8" = 1'-0"

LEGEND

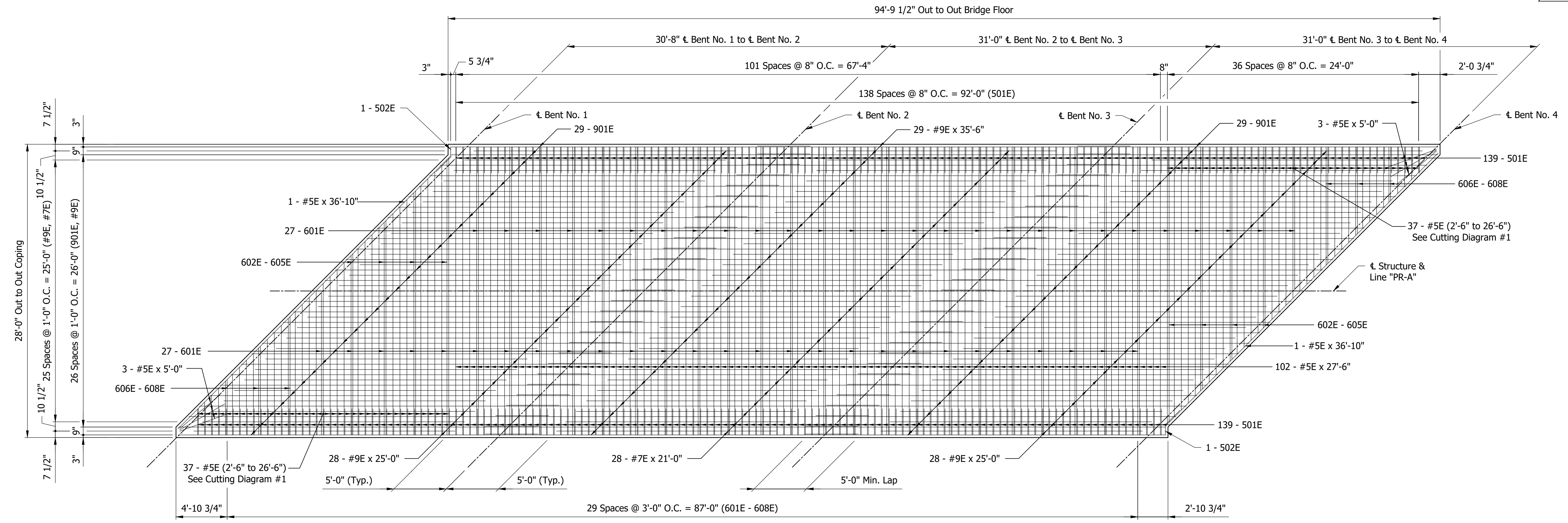
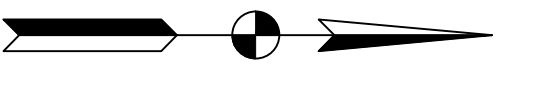
- Present Structure, Remove Portions
- Pavement Removal

ENGINEERING RESOURCES, INC.
Ph: (260) 490-1025
www.eri.consulting
4175 New Vision Drive
Fort Wayne, Indiana 46845

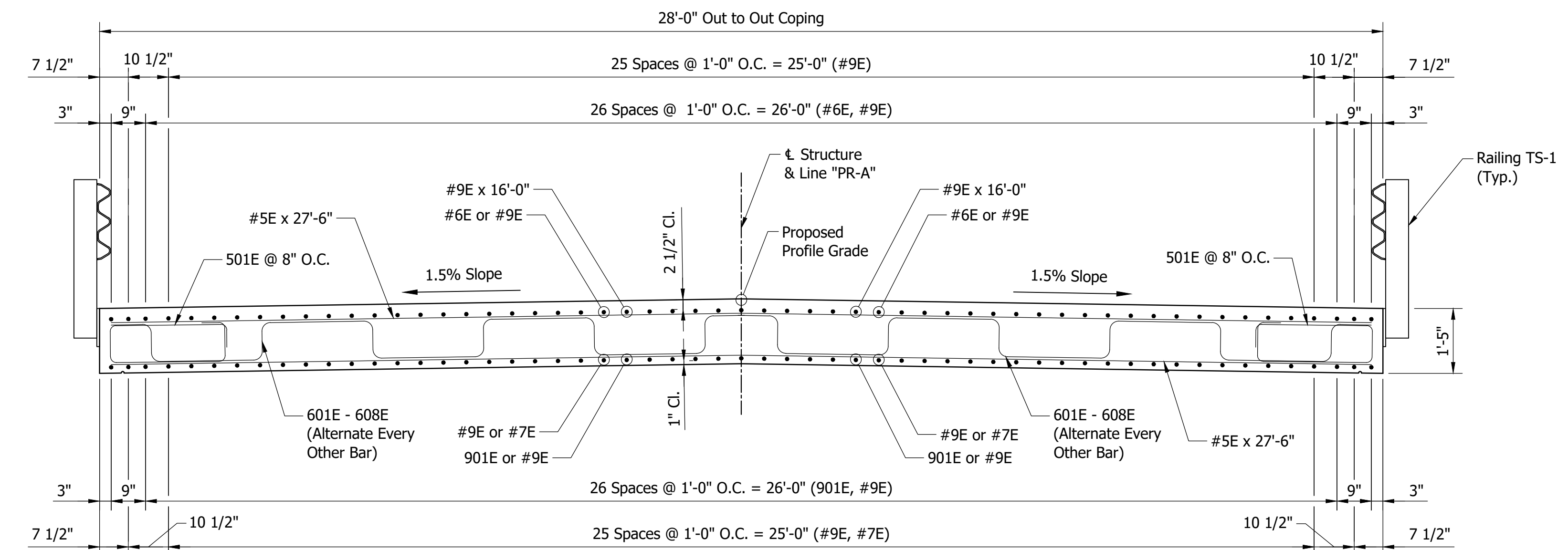


RECOMMENDED FOR APPROVAL	<i>Ka Heidenreich</i>	1/7/2021
DESIGNED: AJI	DRAWN: BKH	DATE
CHECKED: JFW	CHECKED: AJI	

REMOVAL PLAN	SCALE	BRIDGE FILE
	AS NOTED	90-00121
		DESIGNATION
		SHEETS
	12 of 25	
	CONTRACT	PROJECT
		2019-04



BOTTOM SLAB PLAN
Scale: 3/16" = 1'-0"

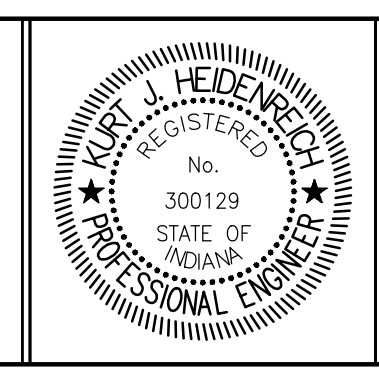


TYPICAL SECTION
Scale: 1/2" = 1'-0"

NOTES

- For Bill of Materials and Bar Bending Details, see Sheet 16.
- All reinforcing bars shall be epoxy-coated.
- For Reinforcing Bar Notes, see Standard Drawing E 703-BRST-01.

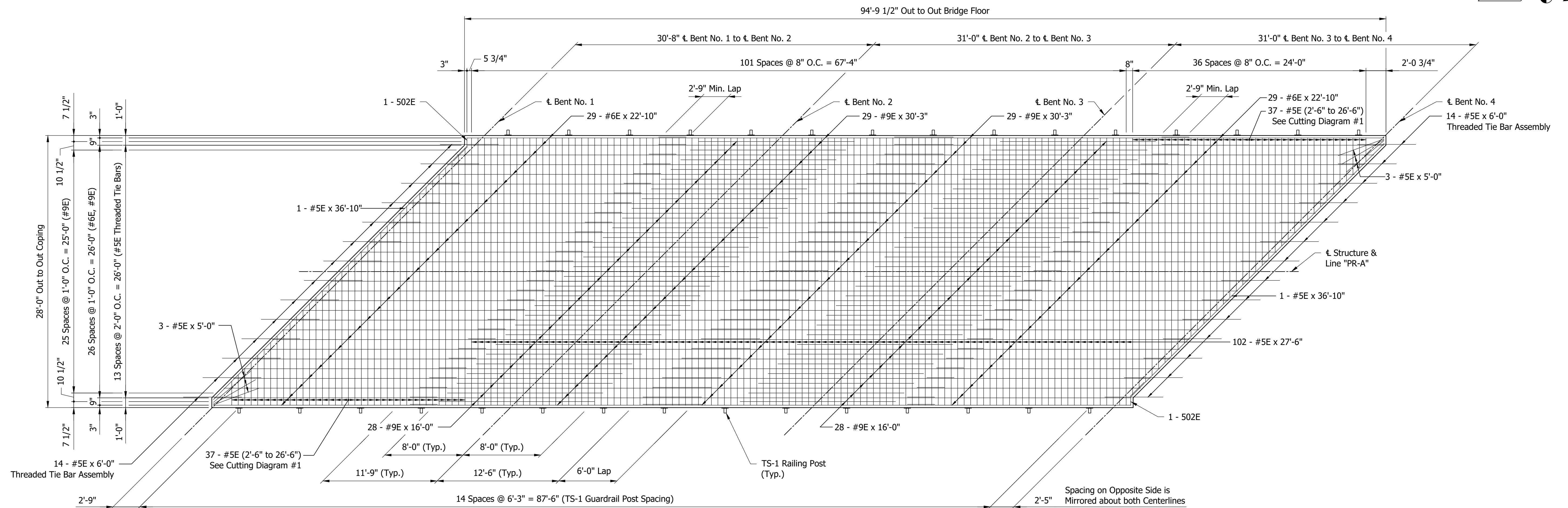
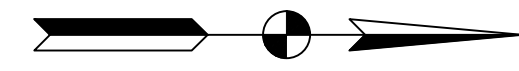
ENGINEERING RESOURCES, INC.
Ph: (260) 490-1025
www.eri.consulting
4175 New Vision Drive
Fort Wayne, Indiana 46845



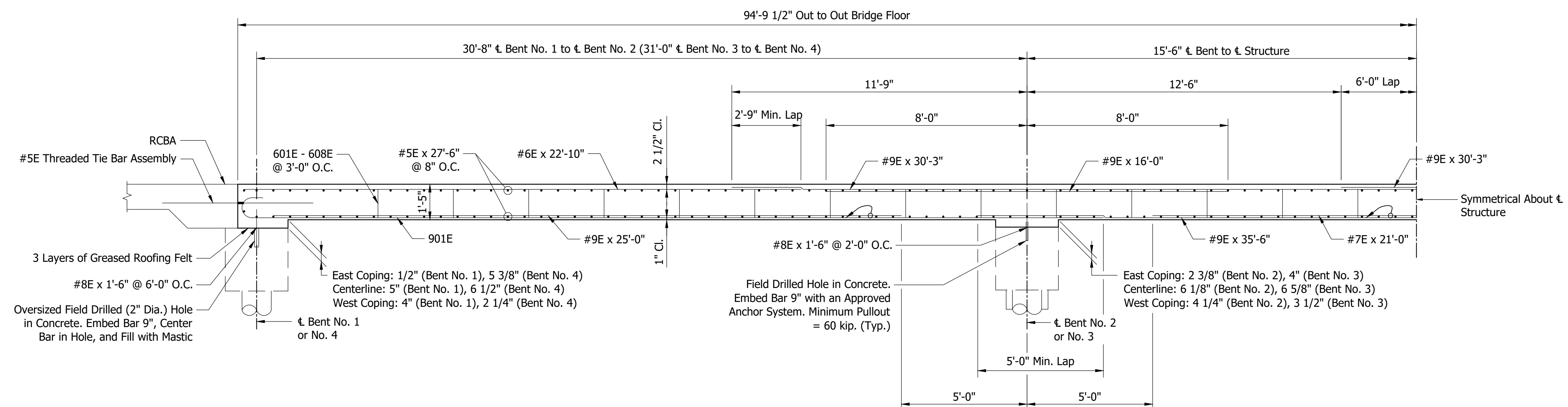
RECOMMENDED FOR APPROVAL: *K. J. Reich*
DESIGN ENGINEER DATE: 1/7/2021
DESIGNED: AJI DRAWN: MRD
CHECKED: KJH CHECKED: AJI

FLOOR DETAILS

SCALE	BRIDGE FILE
AS NOTED	90-00121
	DESIGNATION
	SHEETS
	13 of 25
CONTRACT	PROJECT
	2019-04



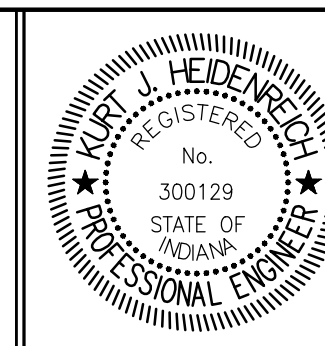
TOP SLAB PLAN
Scale: 3/16" = 1'-0"



HALF LONGITUDINAL SECTION
Scale: 3/8" = 1'-0"

NOTES

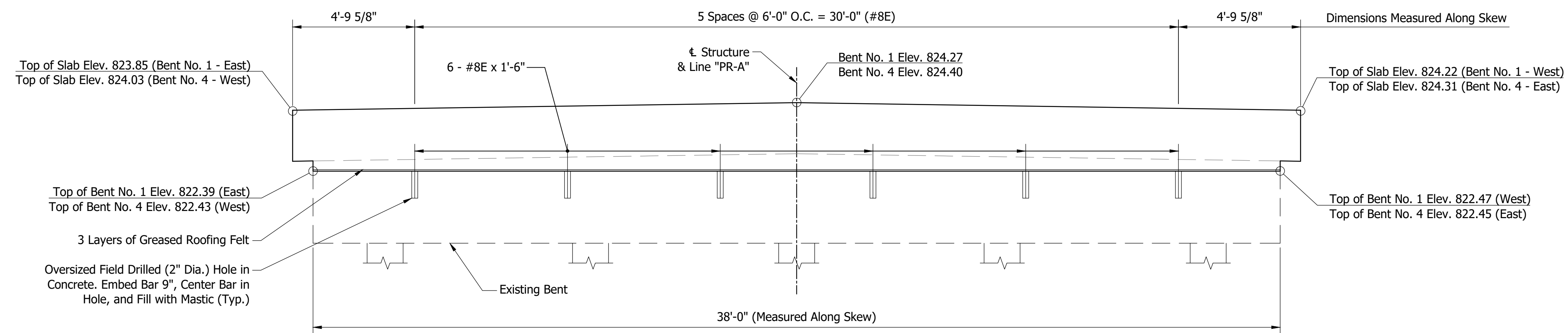
For Bill of Materials and Bar Bending Details, see Sheet 16.
See INDOT Recurring Plan Detail 706-B-140d for TS-1 Railing Details.



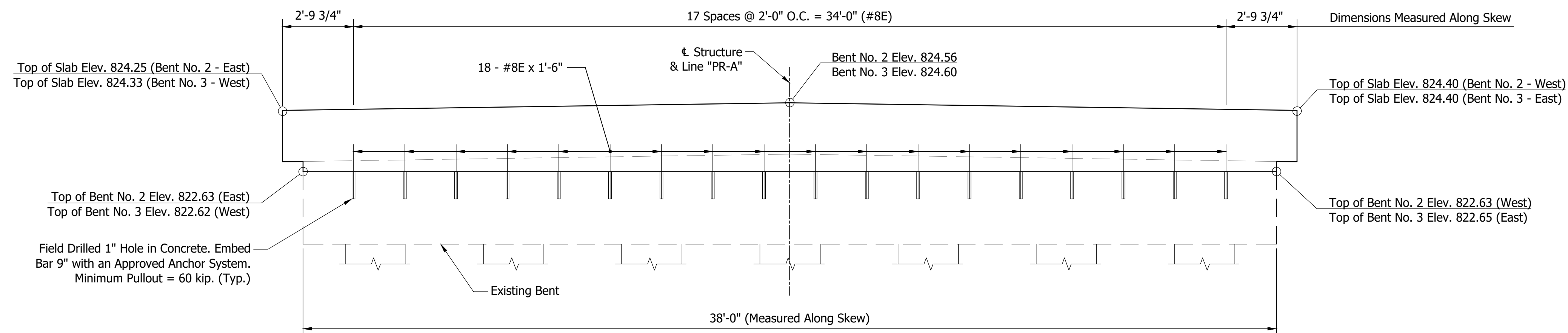
RECOMMENDED FOR APPROVAL: *K. Heidreich*
DESIGN ENGINEER DATE: 1/7/2021
DESIGNED: AJI DRAWN: MRD
CHECKED: KJH CHECKED: AJI

FLOOR DETAILS

SCALE	BRIDGE FILE
AS NOTED	90-00121
	DESIGNATION
	SHEETS
	14 of 25
CONTRACT	PROJECT
	2019-04



BENT NO. 1 AND NO. 4 ELEVATION
Scale: 1/2" = 1'-0"



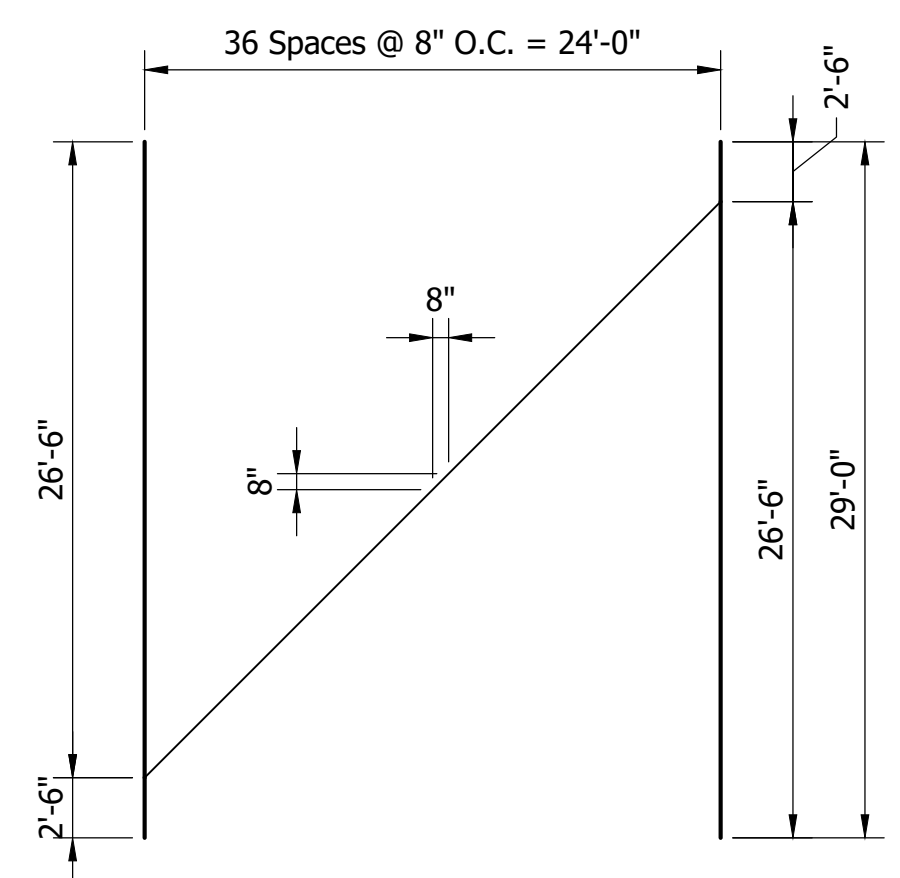
BENT NO. 2 AND NO. 3 ELEVATION
Scale: 1/2" = 1'-0"

NOTES

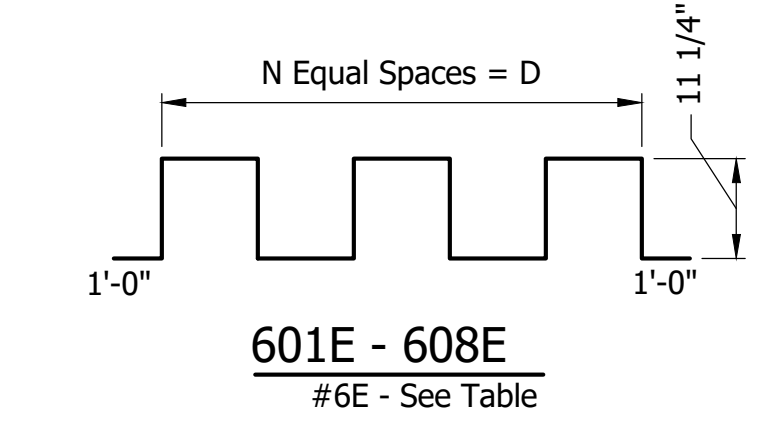
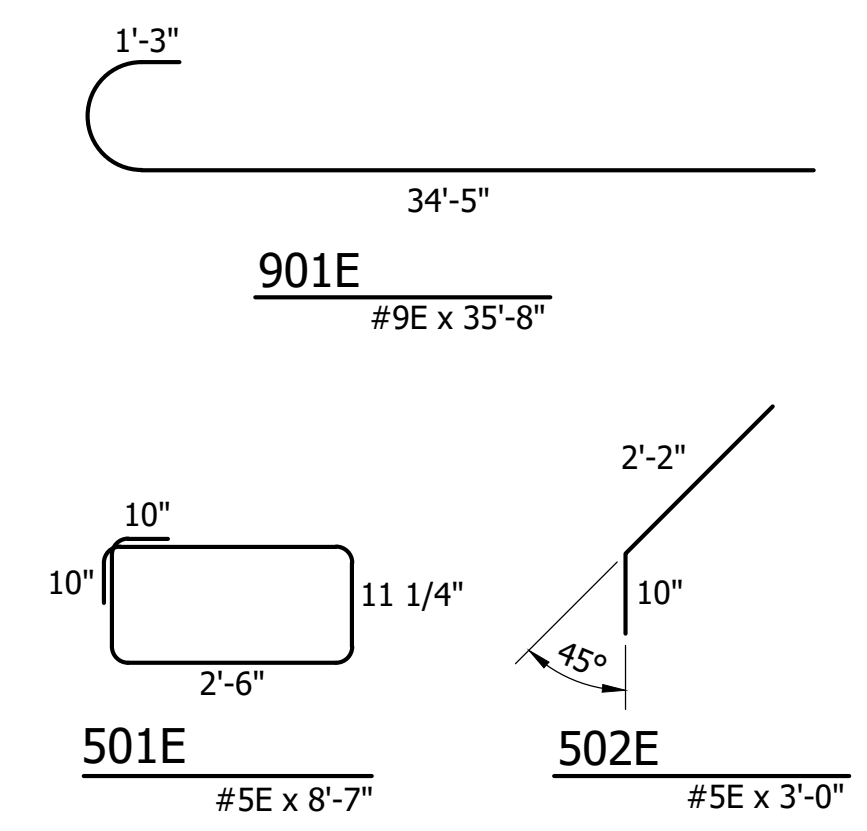
For Bill of Materials and Bar Bending Details, see Sheet 16.

 ENGINEERING RESOURCES, INC. Ph: (260) 490-1025 www.eri.consulting	 K. J. HEIDREICH REGISTERED PROFESSIONAL ENGINEER	RECOMMENDED FOR APPROVAL	 DESIGN ENGINEER	1/7/2021 DATE	SCALE	BRIDGE FILE
		DESIGNED: AJI	DRAWN: MRD		AS NOTED	90-00121
		CHECKED: KJH	CHECKED: AJI			DESIGNATION
						SHEETS
						15 of 25
						PROJECT
						2019-04

FLOOR DETAILS

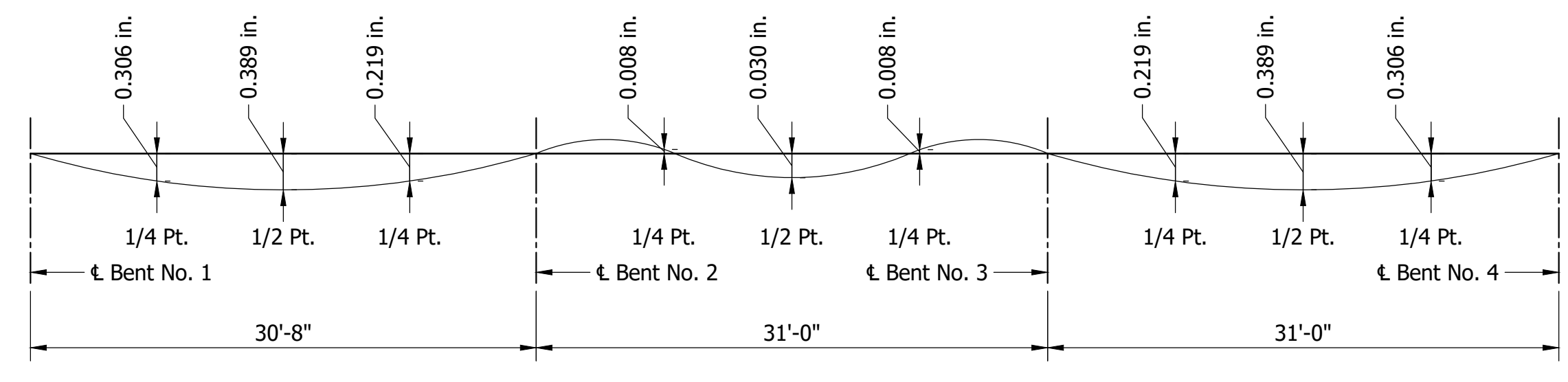


CUTTING DIAGRAM #1
37 - #5E x 29'-0"
Used Twice

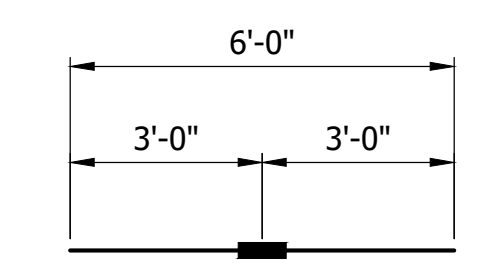


BAR	N	D	TOTAL LENGTH
601E	5	11'-9"	19'-5"
602E	4	10'-6"	17'-2"
603E	3	7'-6"	13'-3"
604E	2	4'-6"	9'-4"
605E	1	1'-6"	5'-5"
606E	4	9'-4"	16'-0"
607E	3	6'-4"	12'-1"
608E	2	3'-4"	8'-2"

BAR BENDING DETAILS
Not to Scale



DEAD LOAD DEFLECTION DIAGRAM
Not to Scale



THREADED TIE BAR ASSEMBLY, EPOXY COATED, #5E
Not to Scale

BILL OF MATERIALS			
SUPERSTRUCTURE			
MARK OR SIZE	NO. REQ'D	LENGTH	WEIGHT
901E	58	35'-8"	
#9E	29	35'-6"	
#9E	58	30'-3"	
#9E	56	25'-0"	
#9E	56	16'-0"	
Total #9E Bars			24,306#
#8E	48	1'-6"	
Total #8E Bars			193#
#7E	28	21'-0"	
Total #7E Bars			1,202#
601E	54	19'-5"	
602E	2	17'-2"	
603E	2	13'-3"	
604E	2	9'-4"	
605E	2	5'-5"	
606E	2	16'-0"	
607E	2	12'-1"	
608E	2	8'-2"	
#6E	58	22'-10"	
Total #6E Bars			3,809#
501E	278	8'-7"	
502E	4	3'-0"	
#5E	4	36'-10"	
#5E	74	29'-0"	
#5E	204	27'-6"	
#5E	12	5'-0"	
Total #5E Bars			10,808#
Total Epoxy Coated Reinf. Bars			40,318#
CONCRETE			
Concrete, Class C, Superstructure			144.8 CYS
MISCELLANEOUS			
Threaded Tie Bar Assembly, Epoxy Coated			28 EA
Railing, TS-1			175.0 LFT
Field Drilled Hole in Concrete			48 EA
Surface Seal*			3,017 SFT

* Estimated Quantity for Information Only

NOTES

All reinforcing bars shall be epoxy-coated.
For Reinforcing Bar Notes, see Standard Drawing E 703-BRST-01.

ENGINEERING RESOURCES, INC.
Ph: (260) 490-1025
www.eri.consulting
4175 New Vision Drive
Fort Wayne, Indiana 46845

KURT J. HEIDENREICH
REGISTERED PROFESSIONAL ENGINEER
No. 300129
STATE OF INDIANA

RECOMMENDED FOR APPROVAL: *Ka. H. H.* 1/7/2021
DESIGNED: AJI
DRAWN: MRD
CHECKED: KJH
DATE

FLOOR DETAILS

SCALE: AS NOTED
BRIDGE FILE: 90-00121
DESIGNATION:
SHEETS: 16 of 25
CONTRACT: PROJECT
2019-04